

名取市美田園 座標面積計算書 (世界測地系)

[字] 七丁目	[界点]	[X座標]	[Y座標]	[辺長]	[方位角]	[備考]
20301	-204352.135	6667.145	2.196	95-33-55		
20302	-204352.302	6669.151	2.013	94-45-32		
20303	-204352.431	6671.158	2.011	93-49-39		
20304	-204352.519	6673.176	2.020	92-29-49		
20305	-204352.547	6675.183	2.007	90-47-57		
20306	-204352.539	6677.191	2.008	89-49-18		
20307	-204352.500	6679.201	2.010	88-53-18		
20308	-204352.474	6679.204	0.723	87-48-07		
20309	-204387.531	6683.042	35.195	174-56-01		
20310	-204384.460	6668.021	14.744	282-01-18		
20311	-204351.922	6664.669	32.743	333-34-43		
	[面積]		487.83			
	[周長]		487.83			

[字] 七丁目 座標面積計算書 (世界測地系)

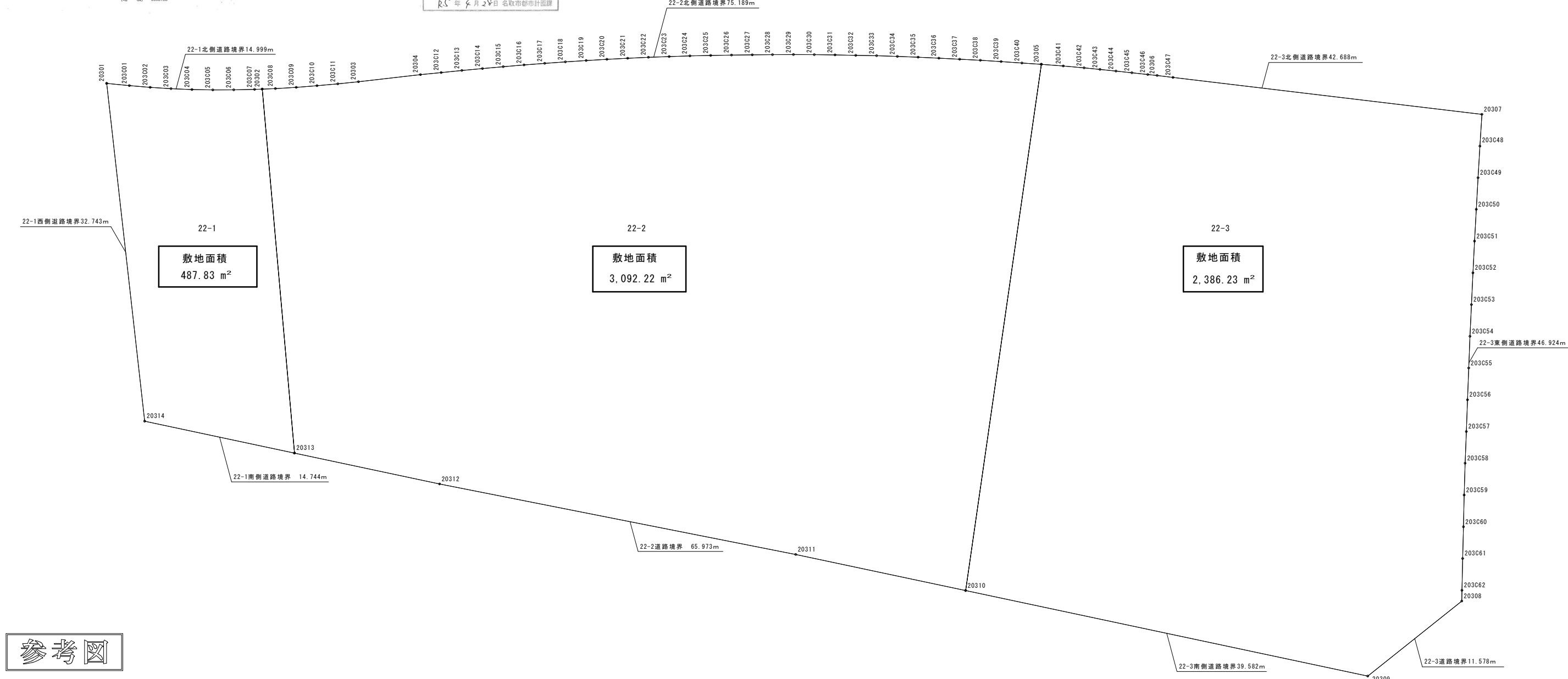
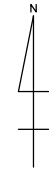
[字] 七丁目	[界点]	[X座標]	[Y座標]	[辺長]	[方位角]	[備考]
20302	-204352.474	6679.204	2.008	89-30-58		
20308	-204352.424	6681.211	1.278	87-45-28		
20309	-204352.302	6683.215	2.008	85-30-49		
20310	-204352.145	6685.216	2.007	84-59-33		
20311	-204351.968	6687.216	2.008	84-59-33		
20301	-204351.765	6689.207	2.001	84-10-42		
20304	-204351.078	6695.175	6.007	83-26-00		
20312	-204350.880	6697.168	2.003	84-19-35		
20313	-204350.681	6699.158	2.000	84-17-22		
20314	-204350.490	6701.150	2.001	84-31-23		
20315	-204350.315	6703.145	2.003	84-49-13		
20316	-204350.150	6705.140	2.002	85-16-19		
20317	-204349.993	6707.133	1.999	85-29-45		
20318	-204349.850	6709.129	2.001	85-54-08		
20319	-204349.722	6711.127	2.002	86-20-04		
20320	-204349.601	6713.127	2.004	86-32-16		
20321	-204349.504	6715.122	1.997	87-12-59		
20322	-204349.407	6717.121	2.001	87-13-19		
20323	-204349.338	6719.120	2.000	88-01-23		
20324	-204349.278	6721.120	2.001	88-16-54		
20325	-204349.233	6723.120	2.001	88-42-40		
20326	-204349.195	6725.121	2.001	88-54-43		
20327	-204349.169	6727.122	2.001	89-15-20		
20328	-204349.152	6729.080	1.958	89-39-59		
20329	-204349.146	6731.096	2.016	89-49-46		
20330	-204349.159	6733.096	2.000	90-22-21		
20331	-204349.183	6735.095	1.999	90-41-16		
20332	-204349.222	6737.095	2.000	91-07-02		
20333	-204349.258	6739.098	2.003	91-41-47		
20334	-204349.321	6741.097	2.000	91-48-18		
20335	-204349.404	6743.095	2.000	92-29-44		
20336	-204349.496	6745.092	1.999	92-38-16		
20337	-204349.597	6747.092	2.003	92-53-28		
20338	-204349.701	6749.094	2.005	92-58-25		
20339	-204349.823	6751.089	1.999	93-29-58		
20340	-204349.958	6753.089	2.005	93-51-42		
20305	-204350.085	6754.961	1.876	93-52-52		
20310	-204400.770	6747.671	51.207	188-11-05		
20311	-204397.293	6731.312	16.734	281-59-57		
20312	-204350.506	6697.016	34.961	281-11-38		
20313	-204387.531	6683.042	14.287	282-01-07		
20308	-204352.474	6679.204	35.195	34-56-01		
	[面積]		3092.221690			
	[周長]		3092.22			

名取市美田園 座標面積計算書 (世界測地系)

[字] 七丁目	[界点]	[X座標]	[Y座標]	[辺長]	[方位角]	[備考]
20305	-204350.085	6754.961	2.005	94-28-53		
20306	-204350.429	6759.076	2.005	95-09-57		
20307	-204350.579	6763.010	1.541	95-35-05		
20308	-204350.735	6767.144	1.542	95-48-24		
20309	-204350.902	6771.081	1.546	96-12-04		
20310	-204351.065	6775.203	1.531	96-46-46		
20311	-204351.161	6779.108	0.910	96-49-39		
20312	-204351.346	6782.637	1.540	96-33-56		
20313	-204351.502	6787.374	29.349	96-49-09		
20314	-204351.365	6791.183	3.069	183-14-06		
20315	-204351.616	6795.005	3.056	183-29-20		
20316	-204351.664	6798.830	3.053	183-17-30		
20317	-204351.121	6798.666	3.061	183-14-16		
20318	-204351.175	6796.512	3.058	182-53-12		
20319	-204373.235	6796.365	3.064	182-49-01		
20320	-204379.287	6796.227	3.055	182-39-50		
20321	-204379.342	6796.107	3.057	182-14-58		
20322	-204382.402	6796.986	3.062	182-15-52		
20323	-204385.458	6795.877	3.058	182-02-34		
20324	-204388.509	6795.760	3.053	182-11-46		
20325	-204391.569	6795.668	3.061	181-43-20		
20326	-204394.626	6795.597	3.058	181-19-50		
20327	-204397.688	6795.520	3.063	181-29-56		
20328	-204400.753	6795.452	3.066	181-10-15		
20329	-204403.782	6795.438	1.029	180-53-27		
20330	-204409.805	6795.387	11.578	231-34-13		
20331	-204400.770	6747.671	39.582	282-00-29		
20305	-204350.085	6754.961	51.207	8-11-05		
	[面積]		2386.235990			
	[周長]		2386.23			

道路境界距離	敷地面積	
75.189m	22-1	487.83 m ²
42.688m	22-2	3,092.22 m ²
46.924m	22-3	2,386.23 m ²
11.578m		
39.582m		
65.973m		
14.744m		
32.743m		
14.999m		
合計 344.420m	合計	5,966.28 m ²

この写しは参考資料としてお使いください。
また利用によって発生した損害等について、
名取市は一切の責任を負いません。
R7年6月29日 名取市都市計画課



参考図